

CUSTOMER SERVICE SCENARIO

CHECKCREDENTIALS

In Figure 3 the activity *CheckCredentials* specifying the behavior of the operation *CustomerService.checkCredentials()* is shown. This operation is responsible for checking the credentials of a customer when he logs into the Web Shop. For a given customer, it is checked whether the provided login and password correspond to the login and password associated with the customer. If this is the case, true is returned. In case a wrong login or password was provided, a false value is provided as output of the activity.

Specify a test suite for the activity *CheckCredentials*, that will:

1. Check if given that the correct login and password of an existing customer are provided as input to the activity
 - the actions *loginEquals* and *passwordEquals* are executed.
 - a true value is provided as output of the activity.
2. Check if given that the incorrect password is provided as input to the activity
 - the actions *passwordEquals* and *passwordFalse* are executed.
 - a false value is provided as output of the activity.

ORDER SERVICE SCENARIO

CONFIRMORDER

In Figure 4 the activity *ConfirmOrder* specifying the behavior of the operation *OrderService.confirmOrder()* is depicted. The activity retrieves the cart of a given customer, creates a new order, adds an order line for each cart item, and destroys the cart items as well as the cart. The order is provided as output of the activity.

Define a scenario consisting of the following objects and links:

- One instance of class *OrderService*
- Two instances of class *Product* with names set.
- Two instances of class *Item* with different unit cost, associated with the given products.
- Two instances of the class *CartItem* with different quantities, associated with the given items.
- One instance of the class *Cart*, associated with the *CartItem* instances.
- One instance of the class *Customer* associated with the *Cart* instance.

Write a test suite that will:

1. Check that the order instance provided as output of the activity *ConfirmOrder* is associated with the customer provided as input.
2. Check that the cart has been removed from the customer by the activity *ConfirmOrder*.
3. Check that the number of order lines in the newly created order is equal to the number of cart items that were contained by the cart of the provided customer.

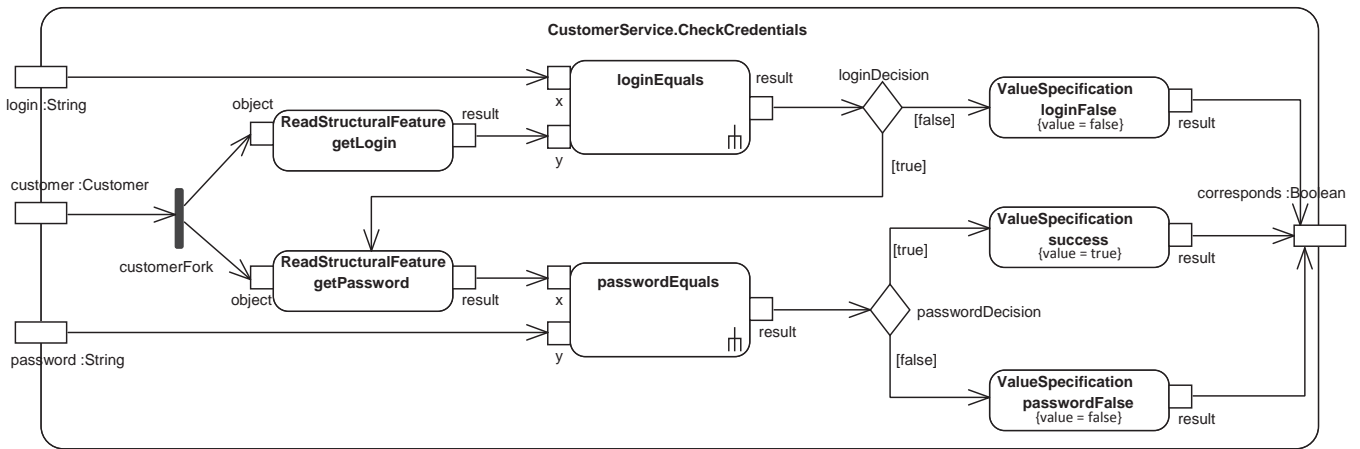


Figure 3: Activity *CheckCredentials* of the *CustomerService* class

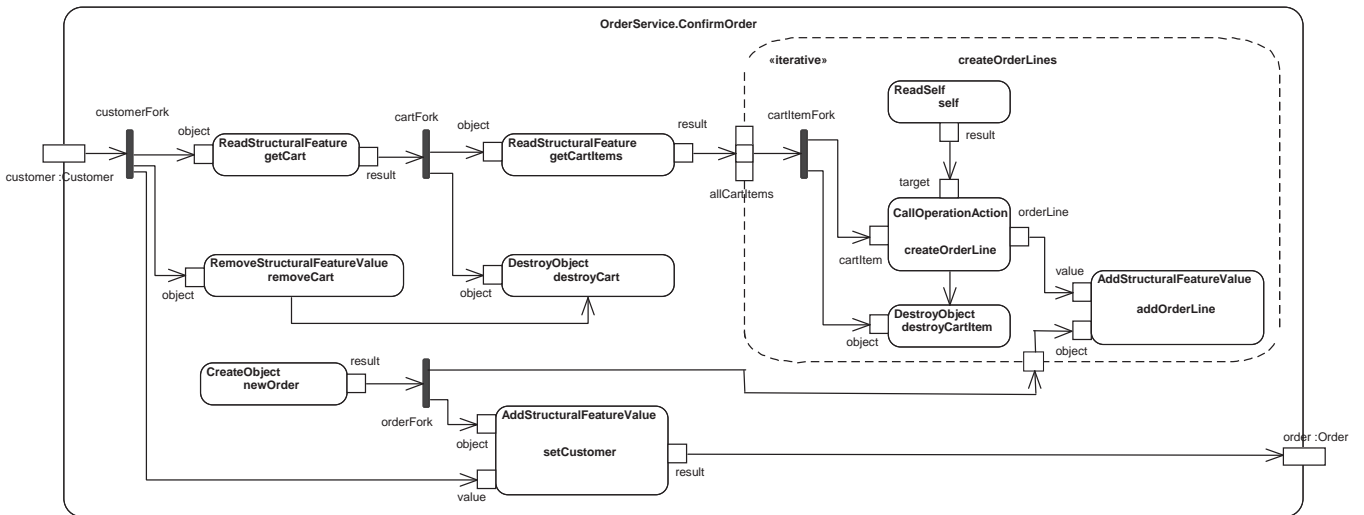


Figure 4: Activity *ConfirmOrder* of the *OrderService* class